



# Indiabulls **Central Park** Indore



# Welcome to Indiabulls Central Park - Indore

Become a part of Indiabulls Central Park,  
which combines the most central location  
with the best of facilities to create a  
unique modern lifestyle



# Location



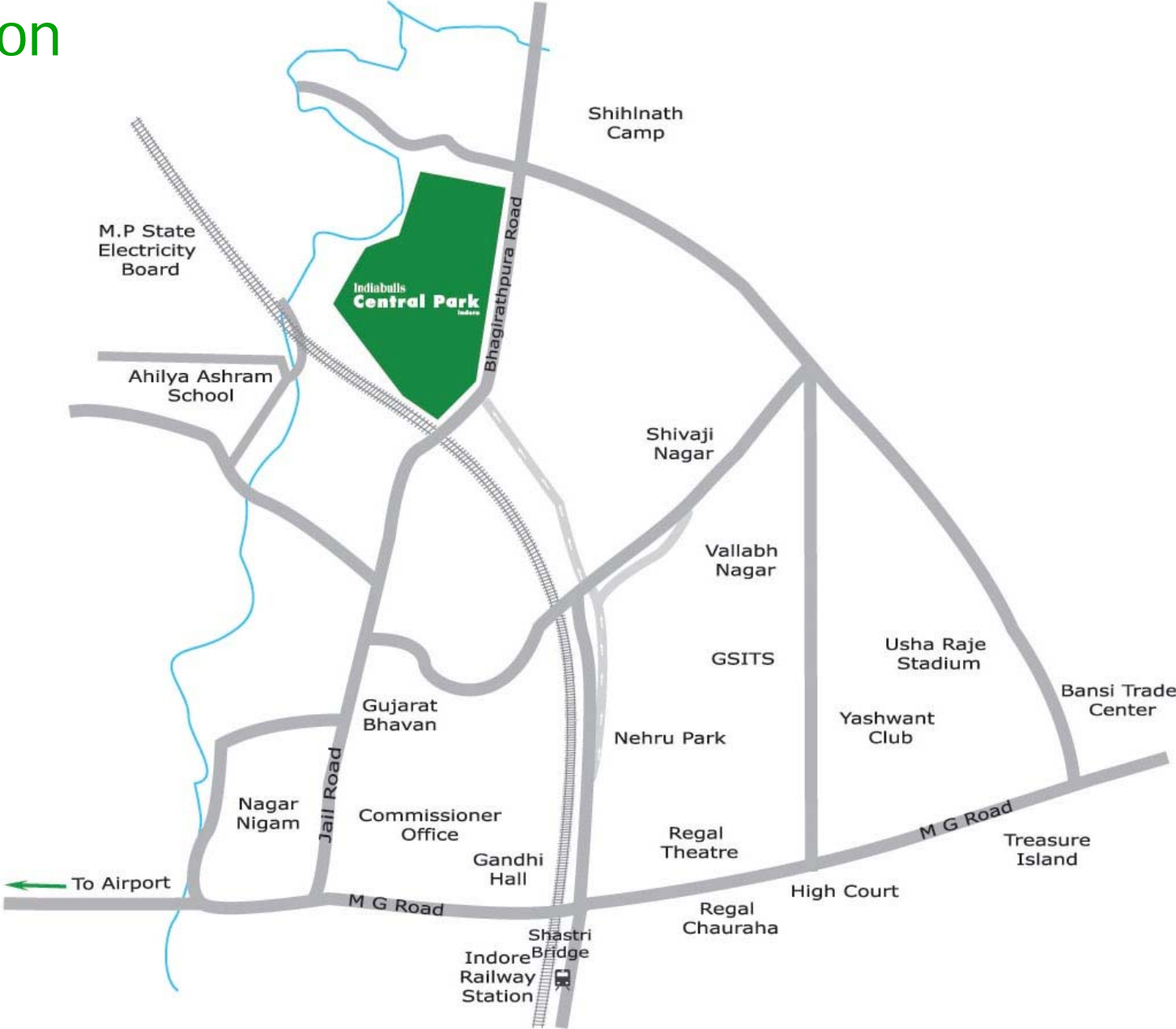
Railway Station – 1.8 kms

Sarwate Bus Stand – 2.3 kms

Airport – 7.5 kms

M.G.Road, GSITS, Yashwant Club, High Court, Usha Raje Stadium - all within 2.0 kms

# Location



# Comfort and convenience have a new home



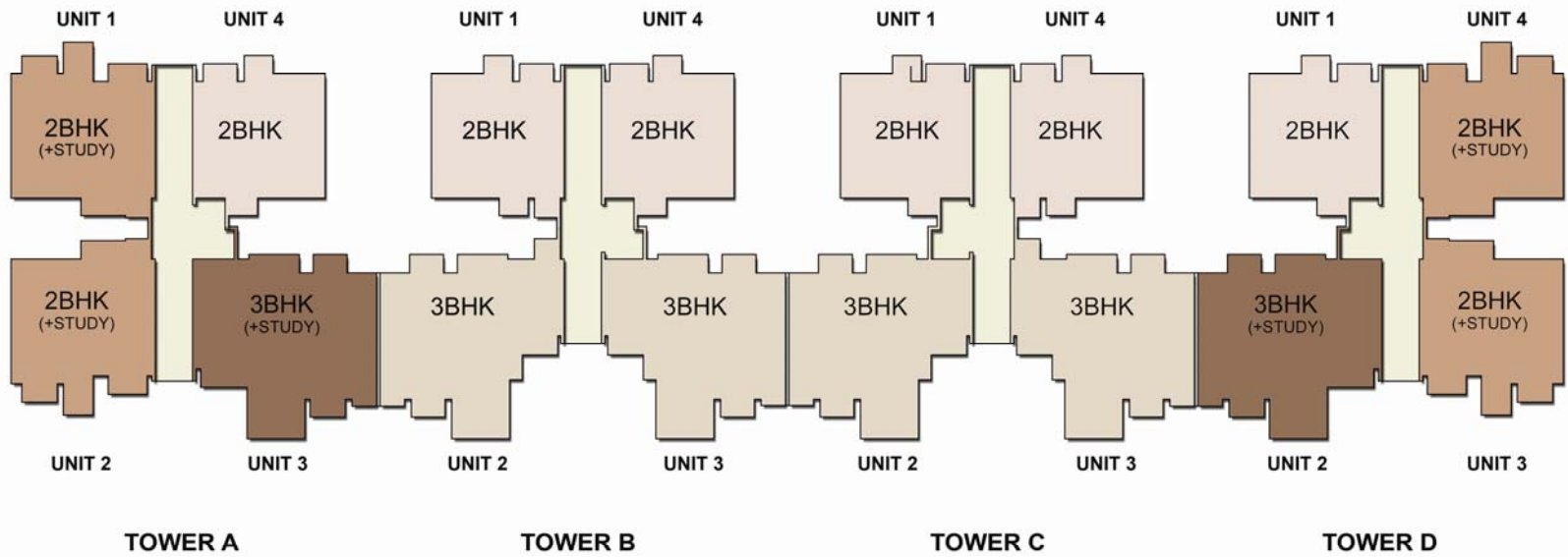
A unique design to maximise space, light and air.

Lush greenery within the township – an ideal place for an evening walk or morning run.

Central clubhouse to give everything you need for your next get together.



- Spread over 15 acres - 15 Residential high-rise towers - Retail and Hotel

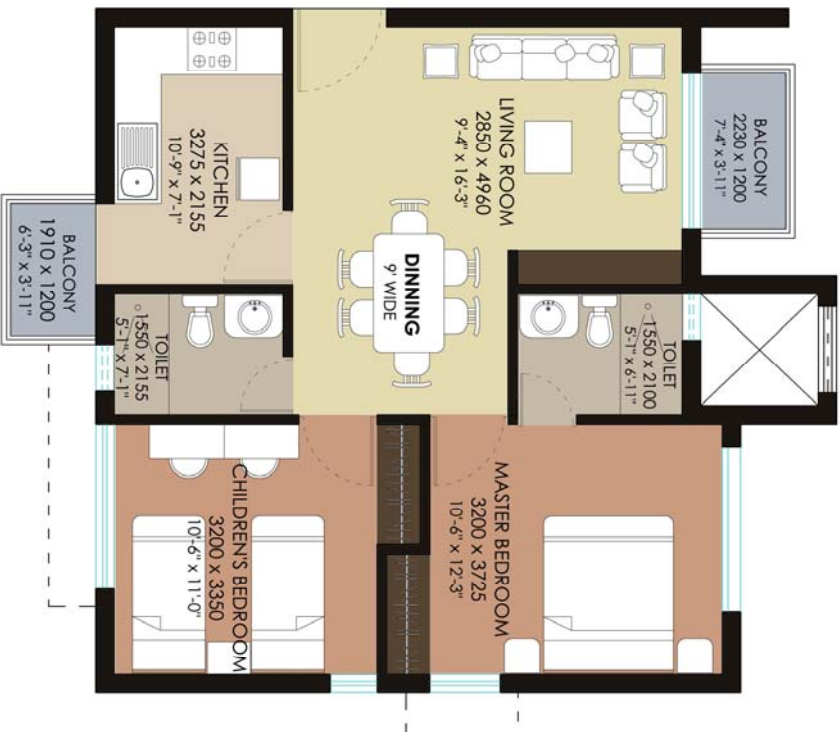


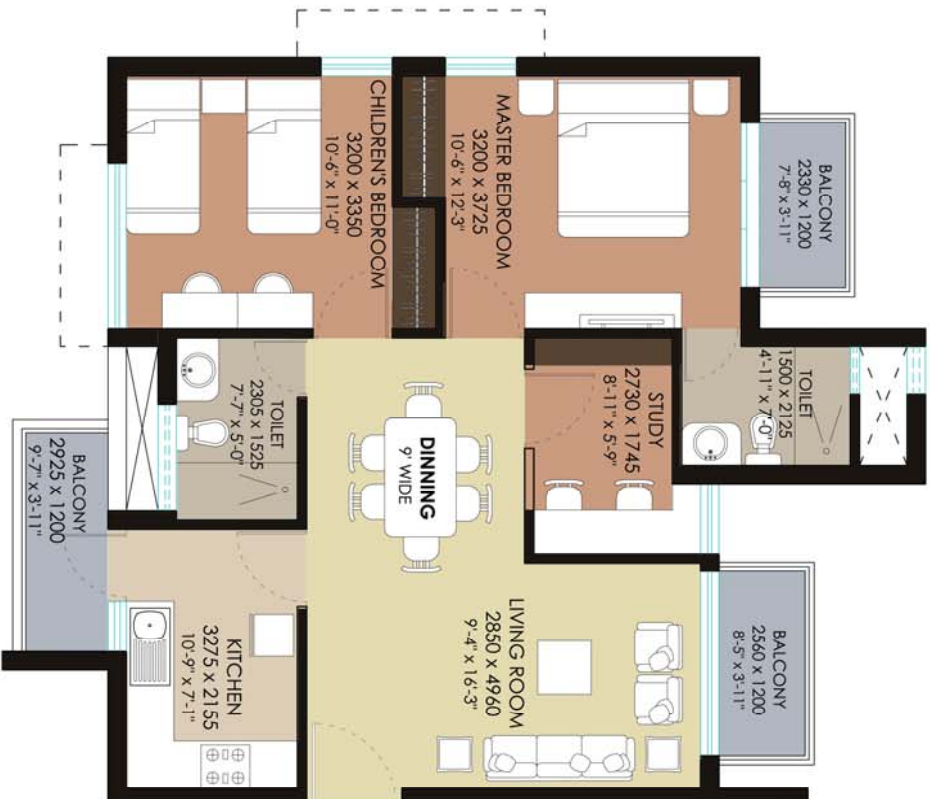




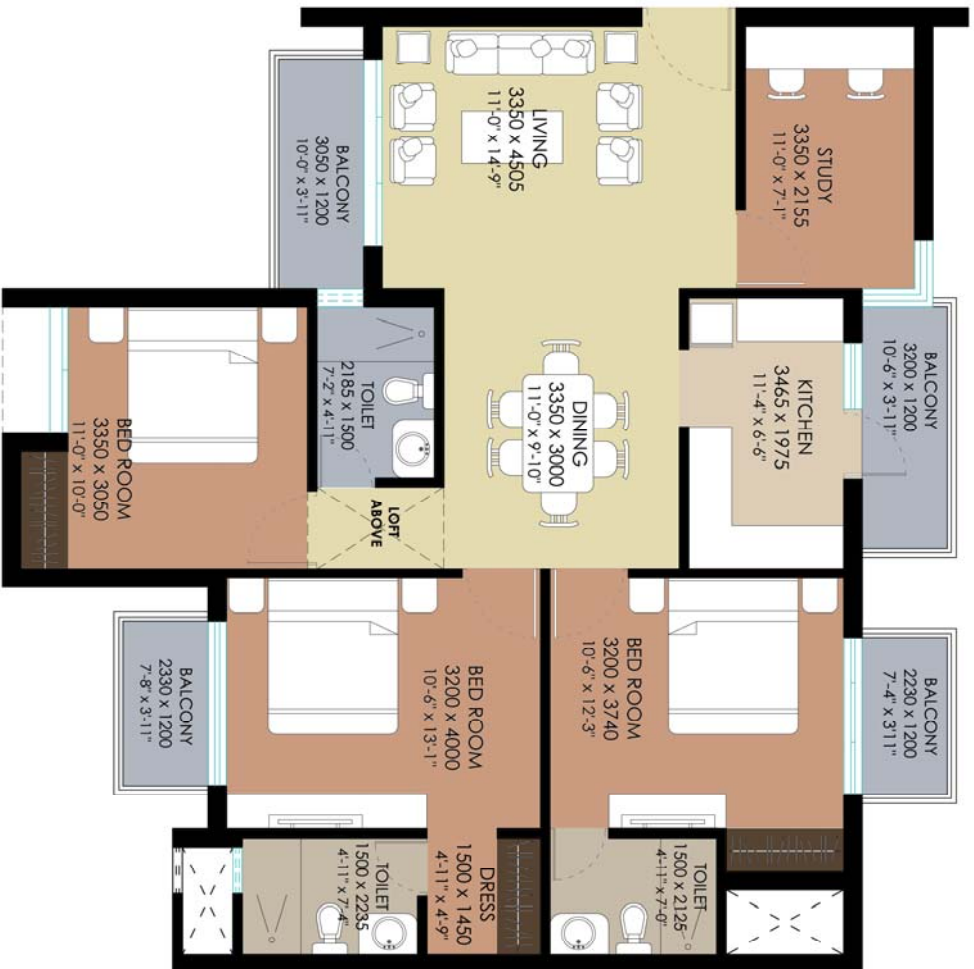












### 3 BHK (+STUDY) UNIT

SALABLE AREA: 1672.5 SQ.FT.

# Amenities



## AMPLE CAR PARKING

### CLUB HOUSE

- Gymnasium
- Table Tennis / Pool Table
- TV Room
- Party Room

### OUTDOOR AMENITIES

- Swimming Pool
- Landscaped Garden
- Jogging Track
- Tennis Court
- Cricket Net
- Children's Play Area / Sand Pit / Tot-Lot
- Sit-outs for Senior Citizens

### CONVENIENCE

- Intercom
- Wi-Fi Connectivity
- Power Back-up for Common Areas and Lifts
- Accessible Convenience Stores
- ATM

### SECURITY

- Round-the-clock Security with Intercom
- CCTV

# Pricing & Payment Schedule

## PRICE

Rate	As applicable
Preferential location charges (PLC)	Park / Pool facing Rs.50 /- per sq ft
Covered parking	Rs.1 lakh per car park
Clubhouse charges	Rs.50,000 /- (mandatory per unit)
Miscellaneous payments	Rs.50,000 /- towards electricity, sewer, water and other charges
Maintenance charges	Rs.25 /- per sq ft (for 2 years)
Taxes	All applicable taxes extra

## PAYMENT SCHEDULE

<b>Booking Amount</b>	<b>Rs. 1,00,000/-</b>
Within 30 days of booking	10% of Sale Price (less booking amount)
On commencement of construction	15% of Sale Price*
On commencement of first floor slab	15% of Sale Price*
On commencement of second floor slab	15% of Sale Price*
On commencement of third floor slab	15% of Sale Price*
On commencement of fourth floor slab	10% of Sale Price*
On commencement of fifth floor slab	10% of Sale Price*
On commencement of all finishing work	5% of Sale Price*
During handover	5% of Sale Price + Clubhouse + Maintenance + Miscellaneous + other incidental charges and taxes

\* Sale Price = (Area x Rate) + Parking + PLC

# Contact

360° Realty

Manish Hinduja

Mobile: 98930-26000

Email: 26000m@gmail.com